

УДК 530.122, 524.74

© Накибов Р. С., Урсулов А. В., 2023

ОРБИТЫ МАССИВНЫХ ЧАСТИЦ В СФЕРИЧЕСКИ СИММЕТРИЧНОМ ГРАВИТАЦИОННОМ ПОЛЕ С УЧЕТОМ КОСМОЛОГИЧЕСКОЙ ПОСТОЯННОЙ*Накибов Р. С.^{a,1}, Урсулов А. В.^{a,2}^a Уральский федеральный университет, г. Екатеринбург, 620002, Россия.

В данной работе представлены результаты теоретического исследования траекторий массивных тел в метрике Коттлера с учетом космологической постоянной Λ . В работе предложена классификация траекторий в одночастичном случае для метрики с положительной и отрицательной космологической постоянной, перебор вариантов основан на различных решениях уравнения траектории, полученных разложением соответствующей алгебраической кривой в ряд Пуизе. В работе также освещены некоторые представляющие интерес типы траекторий, связанные с различными значениями космологической постоянной. Для случая отрицательной космологической постоянной получена ее верхняя оценка на основании анализа кривых вращения галактик.

Ключевые слова: Общая теория относительности, космологическая постоянная, орбиты.

ORBITS OF MASSIVE PARTICLES IN A SPHERICALLY SYMMETRIC GRAVITATIONAL FIELD IN VIEW OF COSMOLOGICAL CONSTANTNakibov R. S.^{a,1}, Ursulov A. V.^{a,2}^a Ural Federal University, Yekaterinburg, 620002, Russia.

In this paper we present the results of a theoretical study of the trajectories of massive particles in the Kottler metric in view of the cosmological constant Λ . For both negative and positive signs of Λ a classification of trajectories is proposed, with entries based on different solutions of the trajectory equation, obtained by the expansion of the corresponding algebraic curve in Puiseux series. We also provide some specific types of trajectories which correspond to different values of the cosmological constant. In the case of negative values of the cosmological constant its upper limit is estimated from the galaxy rotation curves.

Keywords: General Relativity, cosmological constant, orbits.

PACS: 95.10.Eg, 98.80.Es

DOI: 10.17238/issn2226-8812.2023.3-4.218-228

Introduction

It was firstly pointed in 1916 by Einstein that the Λ -term (cosmological constant) should be included in gravitational field equations within the static Universe model[1]. Later in 1918 Kottler considered Λ -term in a centrally-symmetric gravitational field [2]. Subsequently, the study of the cosmological constant faded into the background, since, as it was believed, there were not enough physical grounds to take it into account[3]. Nowadays there is a renewed interest in exploring the contribution of the Lambda-term in the Einstein-Hilbert field equations. On the one hand, in the framework of Λ CDM model the presence of the Λ -term explains the observed accelerating expansion of the Universe[4]. On the other hand, diverting the value of cosmological constant from established in Λ CDM leads to explanation of some other observed astrophysical phenomena (e.g. rotational curves of some galaxies[5, 6]). Besides,

*Работа поддержана Министерством науки и высшего образования Российской Федерации (проект FEUZ20230017).

¹E-mail: nakibov.ruslan@urfu.ru²E-mail: AV.Ursulov@urfu.ru

the presence of cosmological constant has an effect on properties of black holes and event horizon[7, 8], on deflection of light and gravitational lensing[9, 13], and on orbits of massive particles in centrally-symmetric gravitational field[14, 15]. The study of gravitational fields with negative Λ [5, 16] that induce the anti-de Sitter spacetimes[17] is particularly interesting.

1. General statements

Consider a metric tensor of centrally-symmetric gravitational field in coordinates $x^i = \{ct, r, \theta, \varphi\}$ of a remote observer:

$$g_{ik} = \begin{pmatrix} \alpha^2 & 0 & 0 & 0 \\ 0 & -\beta^2 & 0 & 0 \\ 0 & 0 & -\gamma^2 & 0 \\ 0 & 0 & 0 & -\gamma^2 \sin^2 \theta \end{pmatrix}, \quad (1.1)$$

where α, β, γ are continuous functions with variable r , θ is an angle[3]. Without loss of generality consider a motion in an equatorial plane $\theta = \pi/2$. The Hamilton-Jacobi equations of a particle of mass m are given by:

$$g^{ik} \frac{\partial S}{\partial x^i} \frac{\partial S}{\partial x^k} - m^2 c^2 = 0 \quad (1.2)$$

where S is action, E is energy, l is an angular momentum of a massive particle and c is the speed of light.

Substituting

$$S = -Et + l\varphi + S_r(r) \quad (1.3)$$

we obtain the equation of trajectory by

$$\frac{\partial S}{\partial l} = \varphi_0 = \text{const} \quad (1.4)$$

$$\varphi - \varphi_0 = j \int \frac{dr}{\sqrt{-\frac{\gamma^2}{\beta^2} (\gamma^2 + j^2) + k^2 \frac{\gamma^4}{\alpha^2 \beta^2}}} \quad (1.5)$$

where $k = E/mc^2$, $j = l/mc^2$ is a reduced angular momentum. For a centrally-symmetric space k and j are constant in time. The latter can also be interpreted as a characteristic radius dependant on mass and angular momentum since it is measured in meters.

We obtain the potential energy $U(u)$ from the Binet equation[22],

$$\frac{d^2 u}{d\varphi^2} + u = -\frac{1}{mc^2 j^2} \frac{dU(u)}{du}, \quad (1.6)$$

$$U(r) = -\frac{1}{2} mc^2 (j^2 u^2 + u^4 F(r)). \quad (1.7)$$

where $u = 1/r$. Effective potential of a two body problem is given as

$$U_{eff}(r) = -\frac{mc^2}{2} \frac{F(r)}{r^4} \quad (1.8)$$

Here $F(r)$ is a radicand from (1.5):

$$F(r) = -\frac{\gamma^2}{\beta^2} (\gamma^2 + j^2) + k^2 \frac{\gamma^4}{\alpha^2 \beta^2} \quad (1.9)$$

For the Kottler metric with a nonzero cosmological constant Λ and a central body of Schwarzschild radius r_g

$$\alpha^2 = 1 - \frac{r_g}{r} - \frac{\Lambda r^2}{3}, \quad \beta^2 = \frac{1}{\alpha^2}, \quad \gamma^2 = r^2, \quad (1.10)$$

the function $F(r)$ takes the following form

$$F(r) = \frac{\Lambda}{3} r^6 + Kr^4 + r_g r^3 - j^2 r^2 + j^2 r_g r, \quad (1.11)$$

where $K = -(1 - k^2) - \frac{1}{3}\Lambda j^2$.

In the following calculations we assume $r > r_g$, where r_g is an event horizon defined by the equation

$$1 - \frac{r_g}{r} - \Lambda r^2 = 0. \quad (1.12)$$

2. Rotational curves

Consider $\Lambda < 0$. In this case, it becomes possible to explain the problem of galaxy rotational curves[5]. In the classical limit the linear velocity of a circular motion is given by

$$v = \sqrt{\frac{1}{m} r \frac{dU}{dr}} \quad (2.1)$$

Assuming $j = rv(r)/c$ we obtain a following rotational curve

$$\frac{v}{c} = \sqrt{\frac{\frac{1}{3}|\Lambda|r^2 + \frac{1}{2}\frac{r_g}{r}}{2 - \frac{3}{2}\frac{r_g}{r}}}. \quad (2.2)$$

Over large distances the rotational curve given by (2.2) expresses a slow linear growth $\sim \sqrt{|\Lambda|r}$. The linear speed has a minimum value if the inequality $r_g^2 < |\Lambda|^{-1}$ holds, which is the case for a motion outside the event horizon. The radius r_{min} at which the minimum speed is reached and the corresponding speed value v_{min} are given by

$$r_{min} = \sqrt[3]{\frac{3}{4}\frac{r_g}{|\Lambda|} + \frac{3}{8}r_g} \quad (2.3)$$

$$v_{min} = \frac{c}{2} \sqrt[6]{\frac{9}{2}|\Lambda|r_g^2}. \quad (2.4)$$

Since the linear speed exceeds its minimum $v \geq v_{min}$ a constraint can be placed on the value of Λ observed in galaxies.

$$|\Lambda| \leq \frac{2}{9} \left(2 \frac{v_{min}}{c}\right)^6 \frac{1}{r_g^2} = 8 \left(\frac{2}{3}\right)^2 \frac{1}{G^2 c^4} \frac{v_{min}^6}{M^2} \approx 10^{-13} \frac{v_{min}^6}{M^2} \quad (2.5)$$

where G is a gravitational constant, M is a central body mass and $\Lambda < 0$. For a supermassive black hole of mass $M = 10^5 M_\odot$ and $v_{min} \approx 200$ km/s one gets $|\Lambda| < 10^{-52} \text{ m}^{-2}$, which is consistent with estimations given in [5].

3. Circular motion

In the classical limit stable circular orbits correspond to minima of effective potential energy (1.8), unstable orbits to maxima. Assuming (1.11) and $\Lambda < 0$ we get the effective potential

$$U_{eff}(r) = -\frac{mc^2}{2} \frac{1}{r^4} \left(-\frac{1}{3}|\Lambda|r^6 + Kr^4 + r_g r^3 - j^2 r^2 + r_g j^2 r \right) \quad (3.1)$$

Finding the extrema of effective potential leads to an equation

$$\frac{1}{3}|\Lambda|r^5 + \frac{1}{2}r_g r^2 - j^2 r + \frac{3}{2}r_g j^2 = 0, \quad (3.2)$$

which was solved by the Puiseux method (p. 225), the roots of the equation are presented in the Table 1.

Concluding, for particles with angular momentum high enough or mass low enough so that the value of a parameter J exceeds the critical value and the sign changes in the inequality $J < J_c$, where

$$J_c = \sqrt[6]{3/(|\Lambda|r_g^2)}, \quad (3.3)$$

the stable Schwarzschild root changes to a new value that is expressed explicitly through the cosmological constant. For such particles the gravitational pull is mostly provided by the negative cosmological constant. Fig. 1 depicts the stability diagram for the orbits.

Таблица 1. The radii of circular roots in the case of negative cosmological constant. The first case recreates Schwarzschild circular orbits, the second case is a novelty and arises if inequality $J > J_c$ holds, where $J = j/r_g$.

No.	Conditions	Unstable root	Stable root	In dimensionless $\rho = r_g/r$
1	$j < r_g^{2/3}/ \Lambda ^{1/6}, j > r_g, r_g^2 > \Lambda j^2$	$r_1 \approx 3r_g/2$	$r_2 \approx 2j^2/r_g$	$\rho_1 = 3/2, \rho_2 = 2J^2$
2	$j > r_g^{2/3}/ \Lambda ^{1/6}, j > r_g, j^2 > \Lambda r_g^4$	$r_1 \approx 3r_g/2$	$r_2 \approx \sqrt[4]{3j^2/ \Lambda }$	$\rho_1 = 3/2, \rho_2 = \sqrt{J}J_c^{3/2}$

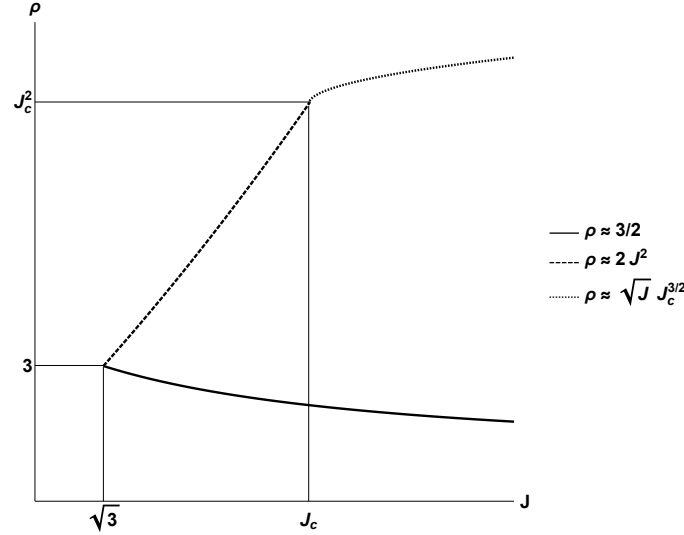


Рис. 1. Stability diagram for circular orbits in dimensionless coordinates. The upper branch corresponds to stable roots, the lower branch to unstable.

4. Non-circular motion. Classification and example orbits

All possible trajectories of non-circular orbits are determined by the equation (1.4) where $F(r)$ is provided by (1.11). Trajectories depend on the number and value of positive roots of the $p(r) = F(r)/r$, ($r \neq 0$).

$$p(r) = -\frac{1}{3}|\Lambda|r^5 + Kr^3 + r_gr^2 - j^2r + j^2r_g = 0 \quad (4.1)$$

It is possible to get some information by applying the Descartes' rule of signs[18]. For $\Lambda < 0$ there exist three roots or a singular root, for $\Lambda > 0$ there are four, two or zero positive roots.

The equation was solved and the roots are present in the Table 2. The roots are divided in eight configurations, and configurations A , B , and C represent cases where finite motion is possible. Since the motion is possible if $p(r) > 0$, then in configurations with a single root ($r < r_1$) the particle may fall inside the central body or the system is located within event horizon, in double root configurations unbound trajectories are found outside the larger radius ($r > r_2$). In a three or five root configurations there exists a region of finite motion ($r_2 < r < r_3$).

Note that in the configuration C with $K < 0$ the lambda-term can be neglected, thus reproducing the Schwarzschild solution. In other cases, the larger root depends on the cosmological constant, only these cases will be considered further.

Let us list some of the orbits. Unbound trajectories outside $r_{max} = \sqrt{3|K|/|\Lambda|}$ in case of $\Lambda > 0$ are either modified hyperbolic spirals if $K > 0$, or modified hyperbolas if $K < 0$:

$$r = \frac{1}{\sqrt{\frac{\Lambda}{3K} - \frac{K\varphi^2}{j^2}}} \quad (4.2)$$

The formula covers both cases. Corresponding trajectories are displayed in Fig. 2 and Fig. 3

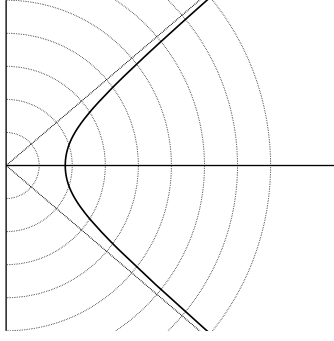
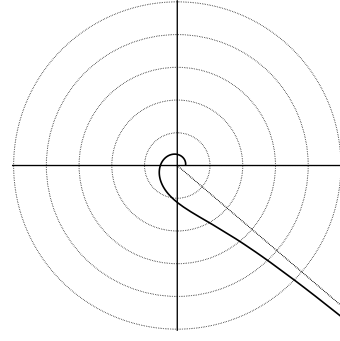
Таблица 2. List of configurations and conditions that lead to such configurations. The order of roots can always be determined via conditions; $\sqrt[3]{1}$ is evaluated in a complex plane; only the first term of roots is present.

No.	Conditions	Roots			
		$\Lambda > 0, K > 0$	$\Lambda > 0, K < 0$	$\Lambda < 0, K < 0$	$\Lambda < 0, K > 0$
1	$ \Lambda ^3 r_g^2 j^4 > K ^5,$ $j^3 \Lambda > r_g,$ $ \Lambda r_g^4 > j^2$	$\sqrt[5]{-1} \sqrt[5]{\frac{3j^2 r_g}{\Lambda}}$	$\sqrt[5]{-1} \sqrt[5]{\frac{3j^2 r_g}{\Lambda}}$	$\sqrt[5]{1} \sqrt[5]{\frac{3j^2 r_g}{ \Lambda }}$	$\sqrt[5]{1} \sqrt[5]{\frac{3j^2 r_g}{ \Lambda }}$
2	$ K ^3 > \Lambda r_g^2,$ $ K ^2 > \Lambda j^2,$ $ K ^5 > \Lambda ^3 j^4 r_g^2,$ $ K j > r_g,$ $\sqrt{ K } r_g > j,$	$\pm i \sqrt{\frac{K}{\Lambda}},$ $\sqrt[3]{-1} \sqrt[3]{\frac{j^2 r_g}{K}}$	$\pm 1 \sqrt{\frac{ K }{\Lambda}},$ $\sqrt[3]{1} \sqrt[3]{\frac{j^2 r_g}{ K }}$	$\pm 1 \sqrt{\frac{K}{ \Lambda }},$ $\sqrt[3]{-1} \sqrt[3]{\frac{j^2 r_g}{K}}$	$\pm i \sqrt{\frac{ K }{ \Lambda }},$ $\sqrt[3]{1} \sqrt[3]{\frac{j^2 r_g}{ K }}$
3	$ \Lambda r_g^2 > K ^3,$ $r_g^4 > \Lambda j^6,$ $r_g > \Lambda j^3,$ $r_g > j,$	$\sqrt[3]{-1} \sqrt[3]{\frac{r_g}{\Lambda}}, \pm ij$	$\sqrt[3]{-1} \sqrt[3]{\frac{r_g}{\Lambda}}, \pm ij$	$\sqrt[3]{1} \sqrt[3]{\frac{r_g}{ \Lambda }}, \pm ij$	$\sqrt[3]{1} \sqrt[3]{\frac{r_g}{ \Lambda }}, \pm ij$
4	$ \Lambda j^2 > K^2,$ $j^6 \Lambda > r_g^4,$ $j^2 > \Lambda r_g^4,$	$\sqrt[4]{1} \sqrt[4]{\frac{j^2}{\Lambda}}, r_g$	$\sqrt[4]{1} \sqrt[4]{\frac{j^2}{\Lambda}}, r_g$	$\sqrt[4]{-1} \sqrt[4]{\frac{j^2}{ \Lambda }}, r_g$	$\sqrt[4]{-1} \sqrt[4]{\frac{j^2}{ \Lambda }}, r_g$
5	$ K ^3 > \Lambda r_g^2,$ $ K ^2 > \Lambda j^2,$ $ K ^5 > \Lambda ^3 j^4 r_g^2,$ $r_g^2 > j^2 K ,$ $r_g > j K ,$ $r_g > j,$	$\pm i \sqrt{\frac{K}{\Lambda}},$ $-\frac{r_g}{K}, \pm ij$	$\pm 1 \sqrt{\frac{ K }{\Lambda}},$ $\frac{r_g}{ K }, \pm ij$	$\pm 1 \sqrt{\frac{K}{ \Lambda }},$ $-\frac{r_g}{K}, \pm ij$	$\pm i \sqrt{\frac{ K }{ \Lambda }},$ $\frac{r_g}{ K }, \pm ij$
A(6)	$ \Lambda r_g^2 > K ^3,$ $r_g^4 > \Lambda j^6,$ $r_g > \Lambda j^3,$ $j > r_g$	$\sqrt[3]{-1} \sqrt[3]{\frac{r_g}{\Lambda}},$ $\frac{j^2}{r_g}, r_g$	$\sqrt[3]{-1} \sqrt[3]{\frac{r_g}{\Lambda}},$ $\frac{j^2}{r_g}, r_g$	$\sqrt[3]{1} \sqrt[3]{\frac{r_g}{ \Lambda }},$ $\frac{j^2}{r_g}, r_g$	$\sqrt[3]{1} \sqrt[3]{\frac{r_g}{ \Lambda }},$ $\frac{j^2}{r_g}, r_g$
B(7)	$K^3 > \Lambda r_g^2,$ $K^2 > \Lambda j^2,$ $K^5 > \Lambda ^3 j^4 r_g^2,$ $j^2 K > r_g,$ $j^2 > K r_g,$	$\pm i \sqrt{\frac{K}{\Lambda}},$ $\pm 1 \frac{j}{\sqrt{K}}, r_g$	$\pm 1 \sqrt{\frac{ K }{\Lambda}},$ $\pm i \frac{j}{\sqrt{K}}, r_g$	$\pm 1 \sqrt{\frac{K}{ \Lambda }},$ $\pm 1 \frac{j}{\sqrt{K}}, r_g$	$\pm i \sqrt{\frac{ K }{ \Lambda }},$ $\pm i \frac{j}{\sqrt{K}}, r_g$
C(8)	$K^3 > \Lambda r_g^2,$ $K^2 > \Lambda j^2,$ $ K ^5 > \Lambda ^3 j^4 r_g^2,$ $r_g^2 > j^2 K ,$ $r_g > j K ,$ $j > r_g$	$\pm i \sqrt{\frac{K}{\Lambda}},$ $-\frac{r_g}{K}, \frac{j^2}{r_g}, r_g$	$\pm 1 \sqrt{\frac{ K }{\Lambda}},$ $\frac{r_g}{ K }, \frac{j^2}{r_g}, r_g$	$\pm 1 \sqrt{\frac{K}{ \Lambda }},$ $-\frac{r_g}{K}, \frac{j^2}{r_g}, r_g$	$\pm i \sqrt{\frac{ K }{ \Lambda }},$ $\frac{r_g}{ K }, \frac{j^2}{r_g}, r_g$

Consider a case of three roots and $\Lambda < 0$. Let us factorize the radical expression of (1.4):

$$\varphi = \int \frac{j dr}{\sqrt{-\frac{1}{3} |\Lambda| r(r-r_1)(r-r_2)(r-r_3)(r-r_4)(r-r_5)}} \quad (4.3)$$

In each of configurations A, B, C (see Table 2) there is a total of five roots, some of which may be negative or complex. The root $r = r_g$ is present only once in each of those configurations and it's the smallest positive root. Assuming that the orbits take place in $r_{max} > r > r_{min} \gg r_g$, we can expand

Рис. 2. Unbound orbit with $\Lambda > 0$, $K > 0$ Рис. 3. Unbound orbit with $\Lambda > 0$, $K < 0$

the factor $(r - r_g)^{-1/2}$ as

$$\frac{1}{\sqrt{r - r_g}} \approx \frac{1}{\sqrt{r}} + \frac{1}{2} \frac{r_g}{r\sqrt{r}} + \dots \quad (4.4)$$

in which case trajectories can be expressed in a form of a linear combination of incomplete elliptic integrals and elementary functions.

$$\varphi = \sqrt{\frac{3j^2}{|\Lambda|}} \left[\int \frac{dr}{r\sqrt{(r_1 - r)(r - r_2)(r - r_3)(r - r_4)}} + \frac{r_g}{2} \int \frac{dr}{r^2\sqrt{(r_1 - r)(r - r_2)(r - r_3)(r - r_4)}} \right] \quad (4.5)$$

The corresponding formulas for the case of four real roots (conf. B , C) and two real and two complex roots (conf. A) are taken from [19]. Here $F(\vartheta|m)$, $E(\vartheta|m)$, $\Pi(\alpha^2; \vartheta|m)$ are incomplete elliptic integrals of first, second and third kind. Let us introduce the notation

$$\begin{aligned} A^2 &= (a - \operatorname{Re}(c))^2 + \operatorname{Im}(c)^2, & B^2 &= (b - \operatorname{Re}(c))^2 + \operatorname{Im}(c)^2, & g &= 1/\sqrt{AB} \\ \alpha &= \frac{bA - aB}{aB + bA}, & \alpha_1 &= \frac{A - B}{A + B}, & X_1 &= 1, & X_2 &= \frac{r_g}{2} \\ m &= \frac{(a - b)^2 - (A - B)^2}{4AB}, & \theta &= \arccos \frac{(a - r)B - (r - b)A}{(a - r)B + (r - b)A}, & \cos \theta &= \operatorname{cnu} \\ R_{-2} &= \frac{1}{m} ((m - \alpha^2(1 - m))F(\theta|m) + \alpha^2 E(\theta|m) + 2\alpha\sqrt{m} \arccos(\operatorname{dnu})) \\ R_{-1} &= F(\theta|m) + \frac{\alpha}{\sqrt{m}} \arccos(\operatorname{dnu}), & R_0 &= F(\theta|m) \\ R_1 &= \frac{1}{1 - \alpha^2} \left(\Pi\left(\frac{\alpha^2}{\alpha^2 - 1}; \theta|m\right) - \alpha \sqrt{\frac{1 - \alpha^2}{m + (1 - m)\alpha^2}} \arctan \left(\sqrt{\frac{m + (1 - m)\alpha^2}{1 - \alpha^2}} \operatorname{sdu} \right) \right) \\ R_2 &= \frac{1}{(\alpha^2 - 1)(m + \alpha^2(1 - m))} \left((\alpha^2(2m - 1) - 2m)R_1 + 2mR_{-1} - mR_{-2} + \frac{\alpha^3 \operatorname{snu} \operatorname{dnu}}{1 + \alpha \operatorname{cnu}} \right), \end{aligned}$$

where $a > b, c, \bar{c}$ are the roots of the radicand. Then for configuration A trajectories are given by the formula:

$$\varphi(r) = \sqrt{\frac{3j^2}{|\Lambda|}} \sum_{s=1}^2 \frac{(A + B)^s g X_s}{(Ab - Ba)^s} \sum_{n=0}^s \frac{\alpha_1^{s-n} (\alpha - \alpha_1)^n s!}{(s - n)! n!} R_n \quad (4.6)$$

Introducing the notation

$$\begin{aligned}
 g &= \frac{2}{\sqrt{(a-c)(b-d)}}, \quad \alpha = \frac{c}{b} \frac{a-b}{a-c}, \quad \alpha_1 = \frac{b}{c} \alpha, \quad X_1 = 1, \quad X_2 = \frac{r_g}{2} \\
 m &= \frac{(a-b)(c-d)}{(a-c)(b-d)}, \quad \theta = \arcsin \sqrt{\frac{(a-c)(r-b)}{(a-b)(r-c)}} \\
 V_0 &= F(\theta|m), \quad V_1 = \Pi(\alpha^2, \theta|m), \quad \sin \theta = \operatorname{sn} u \\
 V_2 &= \frac{1}{2(\alpha^2 - 1)(m - \alpha^2)} (\alpha^2 E(\theta|m) + (m - \alpha^2) F(\theta|m) + \\
 &\quad + (2\alpha^2 m + 2\alpha^2 - \alpha^4 - 3m) \Pi(\alpha^2, \theta|m) - \frac{\alpha^4 \operatorname{sn} u \operatorname{cn} u \operatorname{dn} u}{1 - \alpha^2 \operatorname{sn}^2 u}),
 \end{aligned}$$

where $a > b > c > d$ are roots of the radicand we get trajectories formula for configurations B and C :

$$\varphi(r) = \sqrt{\frac{3j^2}{|\Lambda|}} \sum_{s=1}^2 \frac{gX_s}{b^s} \frac{\alpha_1^{2s}}{\alpha^{2s}} \sum_{n=0}^s \frac{(\alpha^2 - \alpha_1^2)^n s!}{\alpha_1^{2n} n! (s-n)!} V_n \tag{4.7}$$

For any set of parameters $\{\Lambda, r_g, K, j\}$ this process allows to find the set of roots and a suitable formula of trajectory inside the region $r_{max} > r > r_{min}$. These formulas describe the motion from r_{min} to r_{max} , then the particle returns along a similar trajectory.

Note two important cases. The first case arises if $\log_{10}(r_{max}/r_{min}) > 2.3$. The trajectory then is a modified hyperbolic spiral ($\Lambda < 0, K > 0$):

$$r = \frac{1}{\sqrt{\frac{K\varphi^2}{j^2} + \frac{|\Lambda|}{3K}}} \tag{4.8}$$

The second case describes a closed bound orbit in case of $r_g = 0$ and $\Lambda < 0$. Integrating the simplified expression

$$\varphi = \int \frac{j dr}{r \sqrt{\frac{1}{3}\Lambda r^4 + Kr^2 - j^2}}. \tag{4.9}$$

we obtain the general formula for such orbits

$$r = \sqrt{\frac{2j^2/K}{1 - \sqrt{1 + \frac{4}{3} \frac{\Lambda j^2}{K^2} \sin(2\zeta\varphi + \Delta\varphi)}}}, \tag{4.10}$$

where $\Delta\varphi = 0, \zeta = 1$ in case of $r_g = 0$.

Equation (4.10) allows for several trajectories. For $\Lambda > 0$, regardless of the sign of K , hyperbolic orbits follow from the formula, however, if the attraction to the center is provided only by the cosmological constant $\Lambda < 0$, (and $K > 0$), then the formula implies a closed bound orbit. Accounting for the non-zero gravitational radius leads to deviations in the formula and perihelion precession:

$$\zeta = r_{min} r_{max} \sqrt{\frac{|\Lambda|}{3j^2}}, \tag{4.11}$$

$$\Delta\varphi = -\frac{r_g}{r_{min}} E \left(\arcsin \sqrt{\frac{r_{max}^2 (r^2 - r_{min}^2)}{r^2 (r_{max}^2 - r_{min}^2)}} \middle| 1 - \frac{r_{min}^2}{r_{max}^2} \right) \tag{4.12}$$

where $E(\theta|m)$ is an incomplete elliptic integral of the second kind. These variations are displayed in Fig. 4–6. Expressions (4.10)–(4.12) can be used for configuration B if $r_{min} \gg r_g$ due to both r_{min}, r_{max} being independent on r_g in the first term. In other configurations radii depend on gravitational radius and formulas (4.6) and (4.7) should be used.

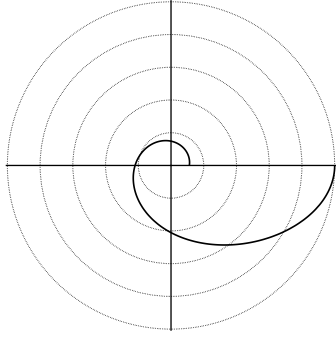


Рис. 4. Modified hyperbolic spiral $\Lambda < 0$, $K > 0$

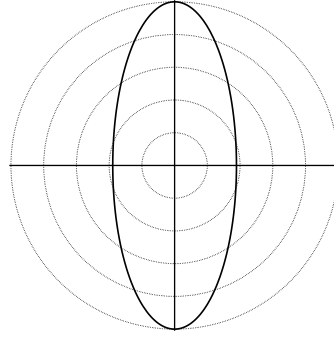


Рис. 5. Closed orbit with $\Lambda < 0$, $K > 0$ and $r_g = 0$.

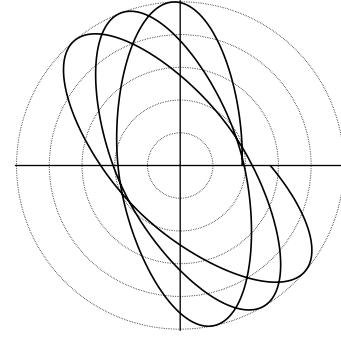


Рис. 6. Bound orbit with perihelion precession with $\Lambda < 0$, $K > 0$ due to accounting for r_g .

5. A study of trajectories

Let us fix r_g and Λ and vary parameters j and K . Then for each pair $\{j, K\}$ one can calculate the value of any quantity P , thus obtaining the dependence $P = P(j, K)$ as a dataset. The function $P = P(j, K)$ then can be represented as a heatmap (e.g. Fig. 7). Finally, comparing the diagrams for different r_g and Λ , one can study the influence of all four parameters on the particle trajectories. The script for such procedure is written and can be shared via e-mail.

In general, bound and spiral orbits are mathematically possible with a variety of combinations of parameters, but not all of them could have been observed in physical systems. It is worth noting some interesting properties of orbits in the case of $\Lambda < 0$.

Trajectories that belong to narrow regions of motion are located at characteristic radii from 100 pc to 100 kpc, which corresponds to the size of galaxies, and if the system is fairly remote the particles cannot escape. In particular, the orbits are limited by $r_{max} = \sqrt[3]{3r_g/|\Lambda|}$ in configuration *A* (see Table 2), which corresponds to low-energy particles. This radius shows weak grows with r_g and also weakly depends on the particle properties (J , K).

Trajectories in wider regions of motion form spiral trajectories despite of a bounded region. In this case the maximal radius can approach the size of an observable Universe ($\sqrt{3/\Lambda}$). There is merit in assuming that a particle at such distance would be captured by another gravitating system. However, not all particles can leave the system in a physically reasonable time. For «slow» particles, the escape along the spiral trajectory will take a significantly longer time and the particle for the observer will effectively remain on the spiral trajectory.

Conclusion

In the present paper we consider the trajectories of massive particles in the Kottler metric for various values of the cosmological constant. A classification of these trajectories is proposed, which is based on the Puiseux method for polynomials. Some specific or notable types of trajectories are outlined. It should be noted that not all obtained trajectories can be found in a real system. However, in our opinion, in addition to academic interest, understanding the nature of trajectories may be useful in planning experiments to determine the sign and magnitude of the cosmological constant.

Appendix. Puiseux method

In the present paper we use a proposed Puiseux method to analyse the main equation for trajectories. This section outlines some key theoretical points concerning the underlying theory and a proposed application of it as a root-finding method for polynomial equations.

The Newton-Puiseux theorem was originally devised for the study of algebraic curves. An algebraic

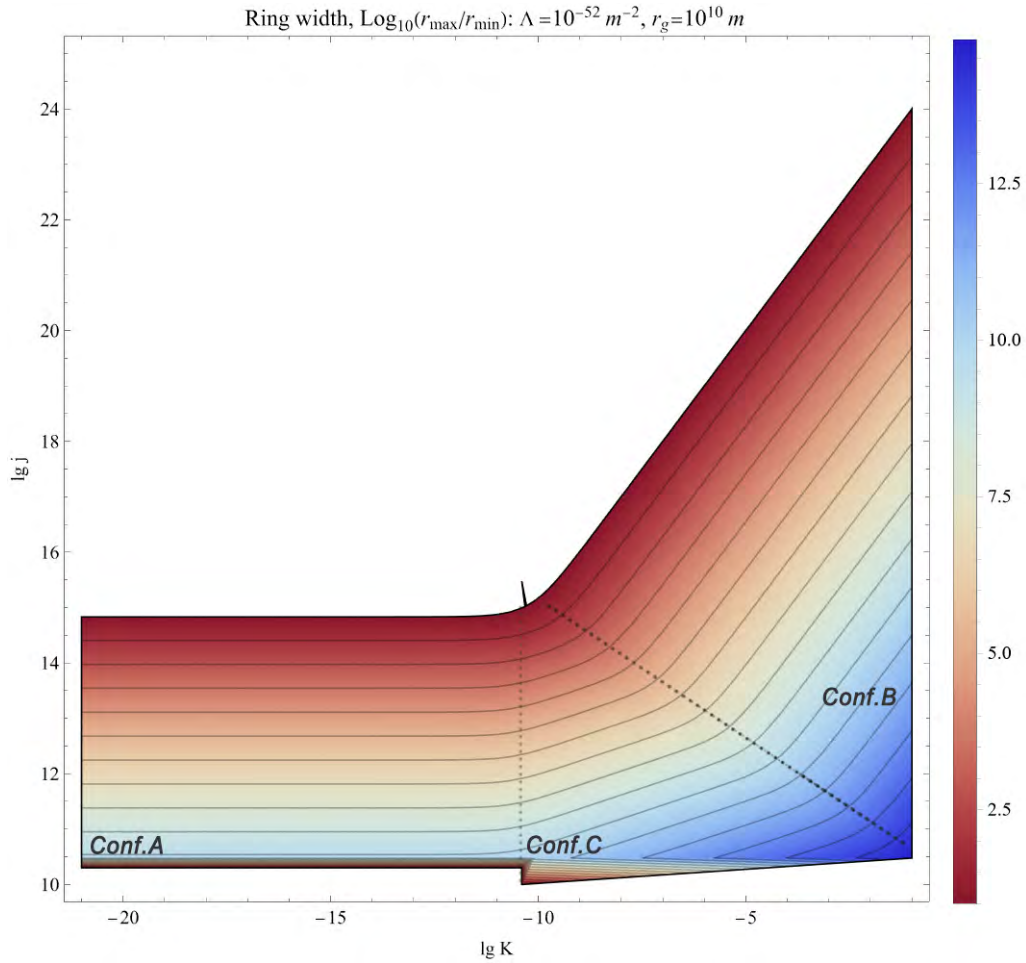


Рис. 7. An example of a heatmap: for any j, K with fixed Λ, r_g a logarithm of the ratio of outer and inner radii is calculated. Larger values correspond to the spiral trajectories, smaller values to bound orbits with precession.

curve $F(x, y) = 0$ is a polynomial function of each of its variables over the field of complex numbers. The theorem provides a method for finding formulas for all of the branches in the form of generalized power series which allows for negatives and fractions, the Puiseux series[21]. Given that the highest order of y in $F(x, y) = 0$ is n , the theorem proves that it is possible to obtain exactly n different expansions $y(x)$ for the branches. For technical details on algorithm see[20].

It is possible to use the Puiseux expansion for the study of polynomials and employ it as a tedious root finding algorithm for polynomials of higher orders. Consider an equation of the form

$$a_n y^n + a_{n-1} y^{n-1} + \dots + a_1 y + a_0 = 0, \quad (5.1)$$

where a_n are parameters (e.g. (4.1)). It is possible to pick a number x and a set of exponents b_i so the following substitution holds

$$a_i = \text{sign}(a_i) x^{b_i}. \quad (5.2)$$

In such form the algebraic equation becomes an algebraic curve and can be expanded in a Puiseux series. The next key point is the usage of Newton polygons. Originally the roots are determined from the slopes of a convex hull of points that represent the terms of a polynomial. Note that different sets of parameters may form the same convex hull, hence yielding same expansions and also note that for given polynomial there is a finite amount of Newton polygons. Consider then a set of all possible Newton polygons. Those are defined by relations of lines and dots which are easy to obtain in the form of sets of inequalities. After inverse substitution these sets become so-called conditions which mark the parameter

space of an equation and Puiseux expansions become approximate formulas suitable for those conditions which effectively solves the equation.

Concluding, we find the main use of the proposed root-finding method not in obtaining precise formulas for equations of higher orders but in extracting valuable information about all possible sets of roots and conditions that induce these roots.

Список литературы/References

1. Einstein A. Kosmologische Betrachtungen zur allgemeinen Relativitätstheorie. *Sitzungsberichte der Königlich Preussischen Akademie der Wissenschaften*, 1917, pp. 142–152.
2. Kottler F. Über die physikalischen Grundlagen der Einsteinschen Gravitationstheorie. *Annalen der Physik*, 1918, vol. 361, pp. 401–462
3. Landau L. D., Lifschits E. M. *The Classical Theory of Fields*, Course of Theoretical Physics, Vol.2. Oxford, Pergamon Press, 1975.
4. Planck Collaboration. Planck 2015 results - XIII. Cosmological parameters *A&A*, 2016, vol. 594, p. A13. doi: 10.1051/0004-6361/201525830
5. Aryal B., Pandey R., Baral N., Khanal U., Saurer W. Estimation of mass and cosmological constant of nearby spiral galaxies using galaxy rotation curve. 2013, *arXiv:1307.1824 [astro-ph.CO]*
6. Farnes J. S. A Unifying Theory of Dark Energy and Dark Matter: Negative Masses and Matter Creation within a Modified Λ CDM Framework. *A&A*, 2016, vol. 620, p. A92. doi: 10.1051/0004-6361/201832898
7. Zakharov A. F. Are signatures of anti-de-Sitter black hole at the Galactic Center? *arXiv e-prints*, 2014, arXiv:1407.2591. doi: 10.48550/arXiv.1407.2591
8. Cruz N., Olivarez M., Villanueva J. R. The golden ratio in Schwarzschild–Kottler black holes. *The European Physical Journal C*, 2017, vol. 77, no. 2. doi: 10.1140/epjc/s10052-017-4670-7
9. Simpson F., Peacock J., Heavens A. On lensing by a cosmological constant. *Monthly Notices of the Royal Astronomical Society*, 2010, vol. 402, no. 3, pp. 2009–2016. doi: 10.1111/j.1365-2966.2009.16032.x
10. Ishak M., Rindler W., Dossett J. More on lensing by a cosmological constant. *Monthly Notices of the Royal Astronomical Society*, 2010, vol. 403, no. 4, pp. 2152–2156. doi: 10.1111/j.1365-2966.2010.16261.x
11. Ishak M., Rindler W. The relevance of the cosmological constant for lensing. *General Relativity and Gravitation*, 2010, vol. 42, no. 9, pp. 2247–2268. doi: 10.1007/s10714-010-0973-9
12. Arakida H., Kasai M. Effect of the cosmological constant on the bending of light and the cosmological lens equation. *Physical Review D*, 2012, vol. 85, no. 2. doi: 10.1103/physrevd.85.023006
13. Lake K. Bending of light and the cosmological constant. *Physical Review D*, 2002, vol. 65, no. 8 doi: 10.1103/physrevd.65.087301
14. Ono T., Suzuki T., Fushimi N., Yamada K., Asada H. Application of Sturm’s theorem to marginal stable circular orbits of a test body in spherically symmetric and static spacetimes. 2015, *arXiv:1508.00101 [gr-qc]*
15. Solanki R. Kottler spacetime in isotropic static coordinates. *Classical and Quantum Gravity*, 2021, vol. 39, no. 1, p. 015015. doi: 10.1088/1361-6382/ac3aa0
16. Chruściel P., Simon W. Towards the classification of static vacuum spacetimes with negative cosmological constant. *Journal of Mathematical Physics*, 2001, vol. 42, no. 4, pp. 1779–1817. doi: 10.1063/1.1340869
17. Gibbons G. W. Anti-de-Sitter spacetime and its uses. 2011, *arXiv:1110.1206 [hep-th]*
18. Xiaoshen W. A Simple Proof of Descartes’s Rule of Signs. *The American Mathematical Monthly*,

- 2004, vol. 111, no. 6, pp. 525-526. doi: 10.1080/00029890.2004.11920108
19. Byrd P.F., Friedman M.D. *Handbook of Elliptic Integrals for Engineers and Scientists*. Springer Berlin Heidelberg, 2012.
 20. Willis N., Didier A., Sonnanburg K. How to compute Puiseux expansion. 2008, *arXiv:0807.4674 [math.AG]*
 21. Wall C. T. C. *Singular Points of Plane Curves*, London Mathematical Society Student Texts. Cambridge University Press, 2004. doi: 10.1017/CBO9780511617560
 22. Goldstein H. *Classical Mechanics*. Addison-Wesley Publishing Company, 1980.

Авторы

Накибов Руслан Субхиддинович, магистр физики, ассистент департамента фундаментальной и прикладной физики, ФГАОУ ВО Уральский федеральный университет, ул. Мира, д. 19, г. Екатеринбург, 620149, Россия.

E-mail: nakibov.ruslan@urfu.ru

Урсулов Андрей Владимирович, к.ф.-м.н., доцент департамента фундаментальной и прикладной физики, Уральский федеральный университет, ул. Мира, д. 19, г. Екатеринбург, 620002, Россия.

E-mail: AV.Ursulov@urfu.ru

Просьба ссылаться на эту статью следующим образом:

Накибов Р.С., Урсулов А.В. Орбиты массивных частиц в сферически симметричном гравитационном поле с учетом космологической постоянной. *Пространство, время и фундаментальные взаимодействия*. 2023. № 3-4. С. 218–228.

Authors

Nakibov Ruslan Subkhiddinovich, M.Phys., assistant at the department of fundamental and applied physics, Ural Federal University, Mira st., 19, Yekaterinburg, 620149, Russia.

E-mail: nakibov.ruslan@urfu.ru

Ursulov Andrey Vladimirovich, Ph.D., Associate Professor at the department of fundamental and applied physics, Ural Federal University, Mira st., 19, Yekaterinburg, 620002, Russia.

E-mail: AV.Ursulov@urfu.ru

Please cite this article in English as:

Nakibov R. S., Ursulov A. V. Orbits of massive particles in a spherically symmetric gravitational field in view of cosmological constant. *Space, Time and Fundamental Interactions*, 2023, no. 3-4, pp. 218–228.